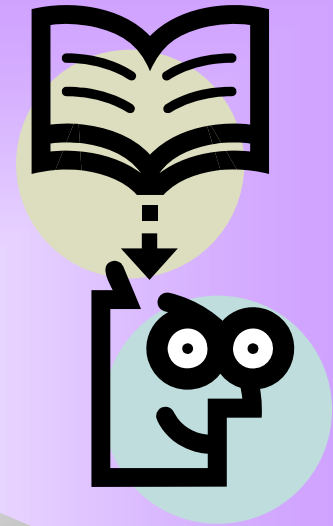


# HIGHLY QUALIFIED

**FOR NEW TEACHERS**



# THE FEDERAL REQUIREMENT FOR NEW TEACHERS

**New teachers must be “highly qualified” to teach the core academic subjects or to provide special education services, or both.**

**A new to the profession special education teacher who is highly qualified in language arts or math or science may teach the core subjects to SPED students and have two years from date of hire to be “highly qualified” in all subjects the teacher teaches.**

## **THE CORE ACADEMIC SUBJECTS ARE:**

**Language arts (including English, bilingual education, and TESOL), reading, mathematics, science, social studies (including civics, government, economics, history and geography), fine arts (including music and visual arts), and modern and classical languages, except Native American languages and cultures of New Mexico tribes and pueblos.**

## **New Teachers Are “Highly Qualified” By Virtue of Their NM License(s) AND Class Assignment(s) IF...**

**The teacher holds a standard general education license and is assigned to teach in the content area authorized by that license.**

**All licenses must be standard licenses with no waiver or temporary status.**

**The special education licensed teacher has a core subject area endorsement on his/her SPED license or has been determined to be highly qualified in language arts, social studies, math or science by a school district and teaches in the endorsement or highly qualified area.**

**The teacher holds a K-12 NM special education license and provides consultation services to “highly qualified” teachers who teach the core subjects by adapting curricula, using behavioral support and interventions, and selecting appropriate accommodations for special education students. The special education teacher does not teach the core subjects.**

**INCLUSION MODEL**

# NCLB IMPLEMENTATION FLEXIBILITY FOR RURAL SCHOOL DISTRICTS

A new hire who teaches in the core academic subjects in a rural school district may have up to three years from the date of hire to become “highly qualified” in all subjects the teacher teaches if he/she is highly qualified in at least one subject. Teachers may qualify by earning 24 semester hours in the content area, passing the content area licensure test or through HOUSSE.

## DISTRICTS THAT QUALIFY FOR RURAL DISTRICT IMPLEMENTATION FLEXIBILITY

ANIMAS	ELIDA	LAKE ARTHUR	PENASCO
CAPITAN	ESTANCIA	LOGAN	QUEMADO
CARRIZOZO	FLOYD	LOVING	QUESTA
CHAMA VALLEY	FORT SUMNER	MAGDALENA	RESERVE
CIMARRON	GRADY	MAXWELL	ROY
CLAYTON	HAGERMAN	MELROSE	SAN JON
CLOUDCROFT	HONDO VALLEY	MESA VISTA	SPRINGER
CORONA	HOUSE	MORA	TATUM
CUBA	JAL	MOSQUERO	TEXICO
DES MOINES	JEMEZ MOUNTAIN	MOUNTAINAIR	VAUGHN
DORA	JEMEZ VALLEY	PECOS	WAGON MOUND
DULCE			

**SUBJECT AREA COMPETENCY HOUSSE  
(NCLB: HIGH OBJECTIVE UNIFORM STATEWIDE  
STANDARD OF EVALUATION)**

**Path One**

**Complete credit hours in the core academic subjects as follows:**

- a) For an elementary or special education teacher teaching in a self contained classroom in an elementary or middle school, 24 hrs, lower or upper division, in the elementary content core curriculum with at least 6 hrs each in language arts, social studies, math, and science.
- b) For an elementary or special education teacher teaching the core subjects as specialty areas in a middle school or high school, 18 hrs, lower or upper division, in each core subject the teacher teaches.

A new to the profession special education teacher who is “highly qualified” in language arts or math or science may teach all the core subjects and have two years from date of hire to be highly qualified in all subjects he/she teaches through credit hours, testing or HOUSSE.

A new hire general education teacher in a rural school district who is highly qualified in one core subject may qualify in other subjects through HOUSSE within three years.

**DISTRICT** enters information on licensure database to report data to PED.

**SUBJECT AREA COMPETENCY HOUSSE  
(NCLB: HIGH OBJECTIVE UNIFORM STATEWIDE  
STANDARD OF EVALUATION)**

**Path Two**

A new to the profession special education teacher who is “highly qualified” in language arts or math or science may teach all the core subjects and have two years from date of hire to be highly qualified in all subjects he/she teaches through credit hours, testing or HOUSSE.

A new hire regular education teacher in a rural school district who is highly qualified in one core subject may qualify in other subjects through HOUSSE within three years.

**Complete lower or upper division credit hours in the core academic subjects as follows:**

- a) For an elementary or special education teacher teaching in an elementary school, 12 hrs across the elementary content curriculum in language arts, social studies, math and science.
- b) For an elementary or special education teacher teaching in a middle school or high school, 12 hrs in any single subject, 15 hrs in two subjects (at least 6 in each one), 18 hrs in three subjects (6 in each one), or 2 hrs in four subjects (6 in each one).

**4) Demonstrate competence in the content areas to a local panel of “highly qualified” teachers following the rules in 6.69.4.9 D (4) NMAC.**

**DISTRICT** enters information on licensure database to report data to PED.

## DOES THE DISTRICT NEED HELP ON “HIGHLY QUALIFIED TEACHERS?”

- Please do not call the Professional Licensure Bureau.
- Please do not have teachers call or come to the Professional Licensure Bureau.
- **Send an e-mail with your questions to the Educator Quality Question and Answer Help Center:**  
**[eqqa@unm.edu](mailto:eqqa@unm.edu)**

-

**SCHOOL  
DISTRICTS  
DETERMINE  
ANNUALLY  
WHO IS**

**HIGHLY  
QUALIFIED**

