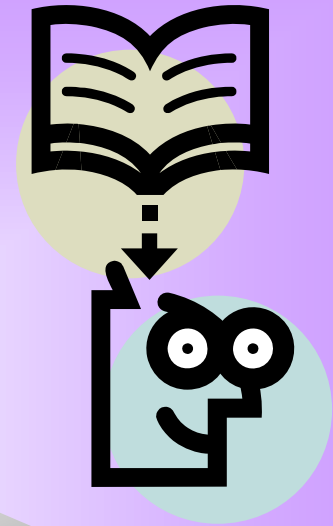


HIGHLY QUALIFIED



**GENERAL EDUCATION
TEACHERS**

THE FEDERAL REQUIREMENT FOR GENERAL EDUCATION TEACHERS

General education teachers who teach the core academic subjects must be “highly qualified” in the core subjects they teach.

Newly hired general education teachers who teach the core academic subjects in qualifying rural school districts, may have up to three years from the date of hire to become highly qualified in all of the core subjects they teach as long as they are qualified in at least one core subject.

THE CORE ACADEMIC SUBJECTS ARE:

Language arts (including English, bilingual education, and TESOL), reading, mathematics, science, social studies (including civics, government, economics, history and geography), fine arts (including music and visual arts), and modern and classical languages, except Native American languages and cultures of New Mexico tribes and pueblos.

NM General Education Teachers Are “Highly Qualified” By Virtue of Their NM License(s) AND Class Assignment(s) IF...

The teacher holds a NM early childhood b- grade 3 license and teaches b-grade 3.

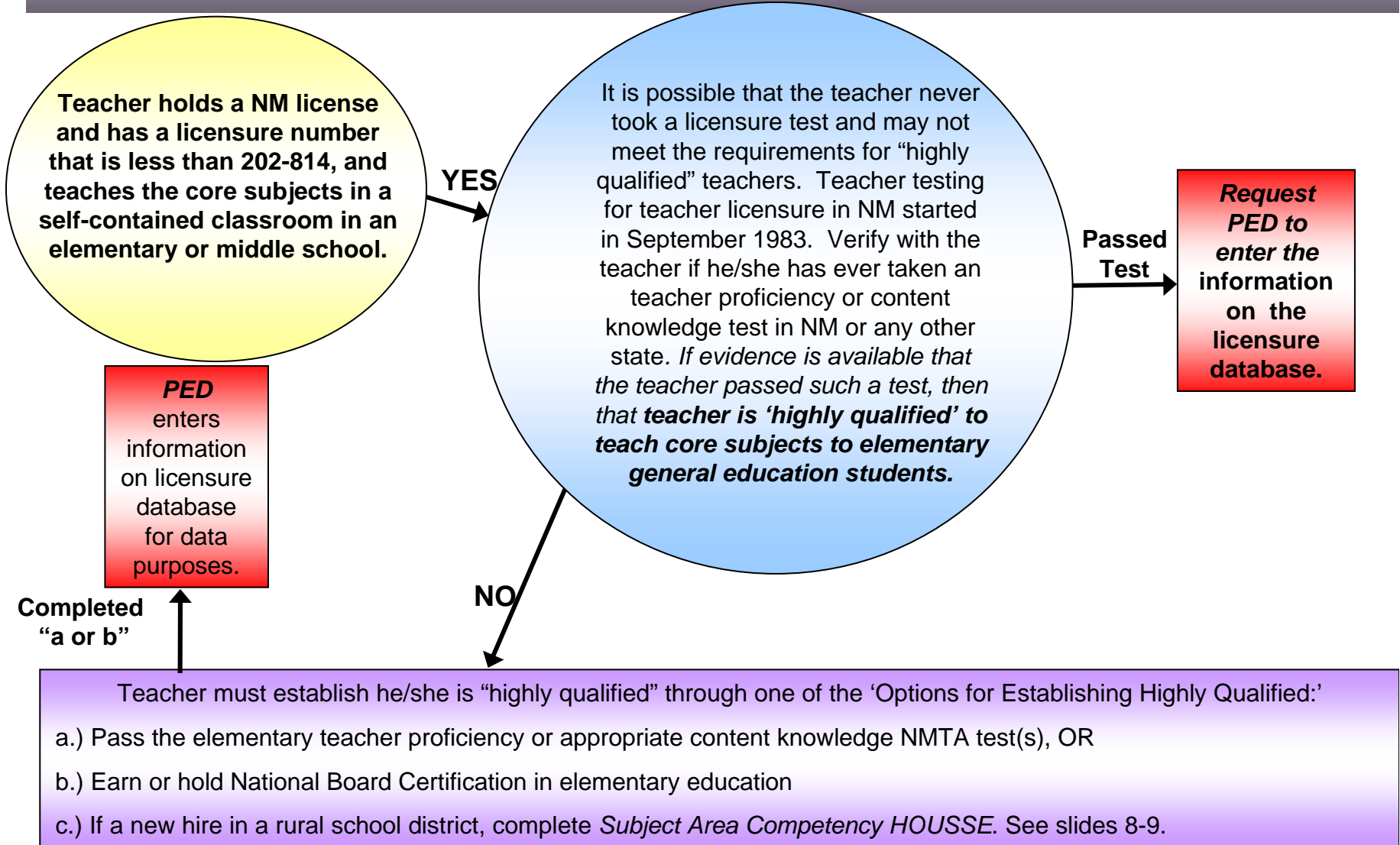
The teacher holds a NM secondary 7-12 license and teaches in his/her endorsement area(s).

The teacher holds a K-12 NM specialty area license and teaches in his/her endorsement area(s).

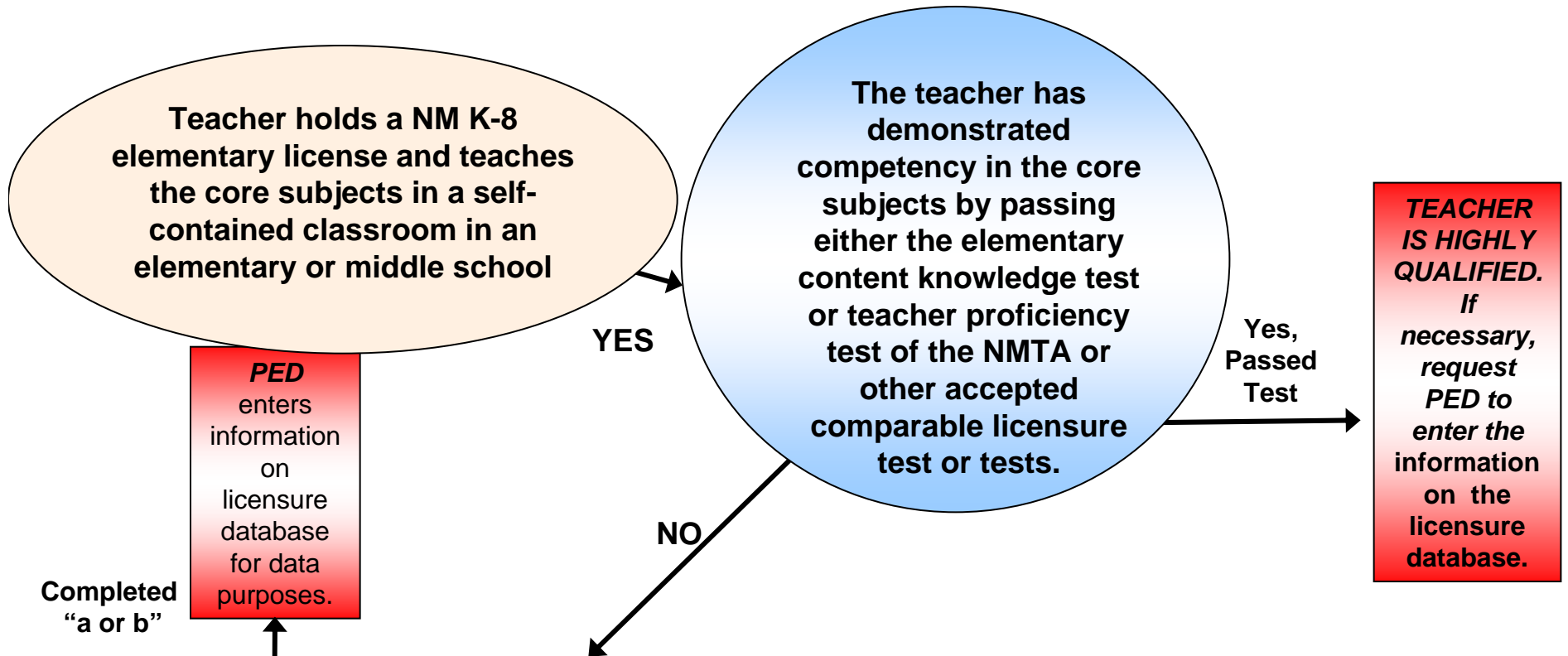
The teacher holds a NM middle level 5-9 license and teaches in his/her endorsement area(s).

The teacher holds a K-8 NM elementary license, is teaching in a self-contained classroom in an elementary or middle school and has passed an elementary content knowledge or teacher proficiency licensure test.

SCENARIO 1: ESTABLISHING THAT AN EXPERIENCED ELEMENTARY TEACHER WHO HAS NOT PASSED LICENSURE TESTING IS “HIGHLY QUALIFIED”



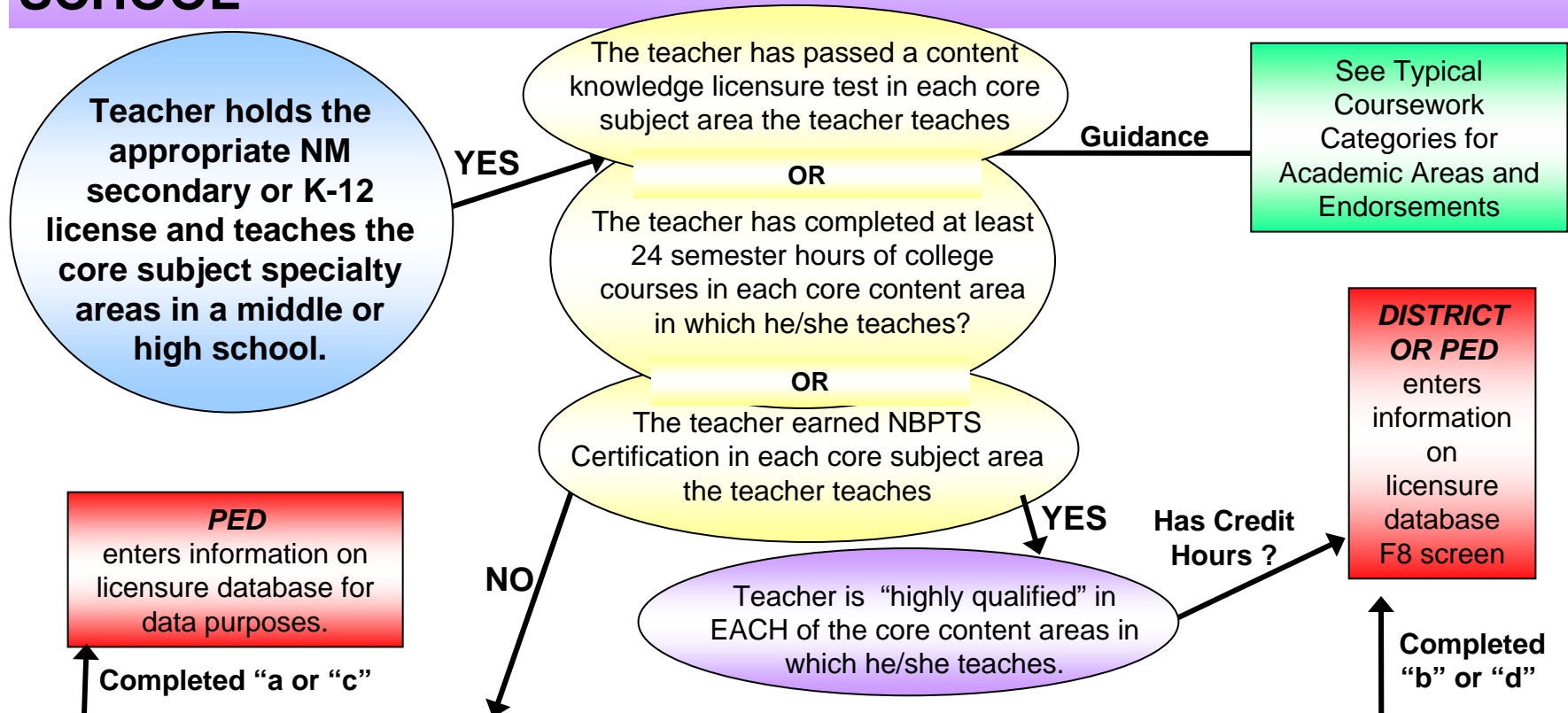
SCENARIO 2: ESTABLISHING THAT AN EXPERIENCED TEACHER IS “HIGHLY QUALIFIED” TO TEACH THE CORE SUBJECTS IN A SELF-CONTAINED ELEMENTARY OR MIDDLE SCHOOL CLASSROOM



Teacher must establish he/she is “highly qualified” through one of the ‘Options for Establishing Highly Qualified:’

- a.) Pass the elementary or secondary teacher proficiency or elementary content knowledge NMTA test, OR
- b.) Earn or hold National Board Certification in elementary or middle level education, OR
- c.) If a new hire in a rural school district, complete *Subject Area Competency HOUSSE*. See slides 8-9.

SCENARIO 3: ESTABLISHING THAT AN EXPERIENCED TEACHER IS “HIGHLY QUALIFIED” TO TEACH THE CORE SUBJECTS SPECIALTY AREAS IN A MIDDLE OR HIGH SCHOOL



Teacher must establish he/she is “highly qualified,” for each core content area he/she teaches, through one of the ‘Options for Establishing Highly Qualified:’

- Pass the appropriate content knowledge test of the NMTA for each core content areas the teacher teaches, OR
- Complete an undergraduate academic major of 24 semester hours upper or lower division, or graduate degree in each of the core content areas the teacher teaches, OR
- Earn National Board Certification in each core content area the teacher teaches, OR
- If a new hire in a rural school district, complete *Subject Area Competency HOUSSE*. See slides 8-9.

**SUBJECT AREA COMPETENCY HOUSSE
(NCLB: HIGH OBJECTIVE UNIFORM STATEWIDE
STANDARD OF EVALUATION)**

Path One

**VETERAN TEACHERS NEWLY HIRED
IN RURAL SCHOOL DISTRICTS**

- 1) Teacher has successful annual evaluations for past two school years.
- 2) Teacher has two complete school years of teaching experience.
- 3) Complete HOUSSE within 3 years of date of hire

**Complete credit hours in the core academic
subjects as follows:**

- a) For K-8 elementary teachers teaching in a self-contained classroom in an elementary or middle school, 24 hrs, lower or upper division, in the core curriculum with at least 6 hrs each in language arts, social studies, math, and science.
- b) For K-8 elementary teachers teaching core subjects as specialty areas in middle school or high school, 18 hrs, lower or upper division, in each core subject the teacher teaches.

DISTRICT enters information on licensure database F8 screen in HOUSSE column to report data to PED.

SUBJECT AREA COMPETENCY HOUSSE (NCLB: HIGH OBJECTIVE UNIFORM STATEWIDE STANDARD OF EVALUATION)

VETERAN TEACHERS NEWLY HIRED
IN RURAL SCHOOL DISTRICTS

Path Two

- 1) Teacher has successful annual evaluations for past two school years.
- 2) Teacher has two complete school years of teaching experience.
- 3) Complete HOUSSE within 3 years of date of hire

Complete lower or upper division credit hours in the core academic subjects as follows:

- a) For a K-8 elementary teacher teaching in a self-contained classroom in an elementary or middle school, 12 hrs across the core content curriculum in language arts, social studies, math and science.
- b) For a K-8 elementary teacher teaching core subjects as specialty areas in a middle school or high school, 12 hrs in any single subject, 15 hrs in two subjects (at least 6 in each one), 18 hrs in three subjects (6 in each one), or 24 hrs in four subjects (6 in each one).
- c) Demonstrate competence in the content areas to a local panel of "highly qualified" teachers following the rules in 6.69.4.9 D (4) NMAC.

Note: Secondary and K-12 teachers must secure licensure endorsements from PED in the core subject areas.

DISTRICT enters information on licensure database F8 screen in HOUSSE column to report data to PED.

NCLB IMPLEMENTATION FLEXIBILITY FOR RURAL SCHOOL DISTRICTS

A new hire who teaches in the core academic subjects in a rural school district may have up to three years from the date of hire to become “highly qualified” in all subjects the teacher teaches if he/she is highly qualified in at least core one subject.

DISTRICTS THAT QUALIFY FOR RURAL DISTRICT IMPLEMENTATION FLEXIBILITY

ANIMAS	ELIDA	LAKE ARTHUR	PENASCO
CAPITAN	ESTANCIA	LOGAN	QUEMADO
CARRIZOZO	FLOYD	LOVING	QUESTA
CHAMA VALLEY	FORT SUMNER	MAGDALENA	RESERVE
CIMARRON	GRADY	MAXWELL	ROY
CLAYTON	HAGERMAN	MELROSE	SAN JON
CLOUDCROFT	HONDO VALLEY	MESA VISTA	SPRINGER
CORONA	HOUSE	MORA	TATUM
CUBA	JAL	MOSQUERO	TEXICO
DES MOINES	JEMEZ MOUNTAIN	MOUNTAINAIR	VAUGHN
DORA	JEMEZ VALLEY	PECOS	WAGON MOUND
DULCE			

- **NEW MEXICO PUBLIC SCHOOL DISTRICTS MUST DETERMINE IF THEIR TEACHERS ARE “HIGHLY QUALIFIED” IF THEY FALL INTO SCENARIOS ONE, TWO OR THREE ABOVE.**
- **DISTRICTS REPORT THEIR “HIGHLY QUALIFIED” TEACHER DETERMINATIONS TO THE PED THROUGH THE LICENSURE DATABASE ON THE F7 SCREEN. DISTRICTS CAN RUN STATUS REPORTS THROUGH “STARS” AFTER 40TH, 80TH, 120TH DAY SUBMISSIONS.**

DOES THE DISTRICT NEED HELP ON “HIGHLY QUALIFIED TEACHERS?”

- Please do not call the Professional Licensure Bureau.
- Please do not have teachers call or come to the Professional Licensure Bureau.
- **Send an e-mail with your questions to the Educator Quality Question and Answer Help Center:**
eqqa@unm.edu

-

**SCHOOL
DISTRICTS
DETERMINE
ANNUALLY
WHO IS**

HIGHLY QUALIFIED

